



60160

JZVQ Bell Housing Kit

Transmission Needed:

2003-2006 Nissan 350Z/Infiniti G35 (VQ35DE)

2007-2009 350Z/Infiniti G35 (VQ35HR), Requires adapter ring #10145.7

2010-Present 370Z/Infiniti G37 (VQ37VHR), Requires adapter ring #10145.6

Tools Needed:

Sawzall with 12" blade

Cutoff Grinder

Parts List

Bellhousing, JZVQ

Bellhousing/Trans Bolts

Bellhousing/Block Bolts

Slave Cylinder Bolts

Hardware

M8 x 1.25 x 35 Flanged Hex Head Bolt

M12 x 1.25 x 45 Flanged Hex Head Bolt

M10 x 1.25 x 45 Flanged Hex Head Bolt

M8 x 1.25 x 25 Flanged Hex Head Bolt

Qty

1

11

5

4

2

Optional

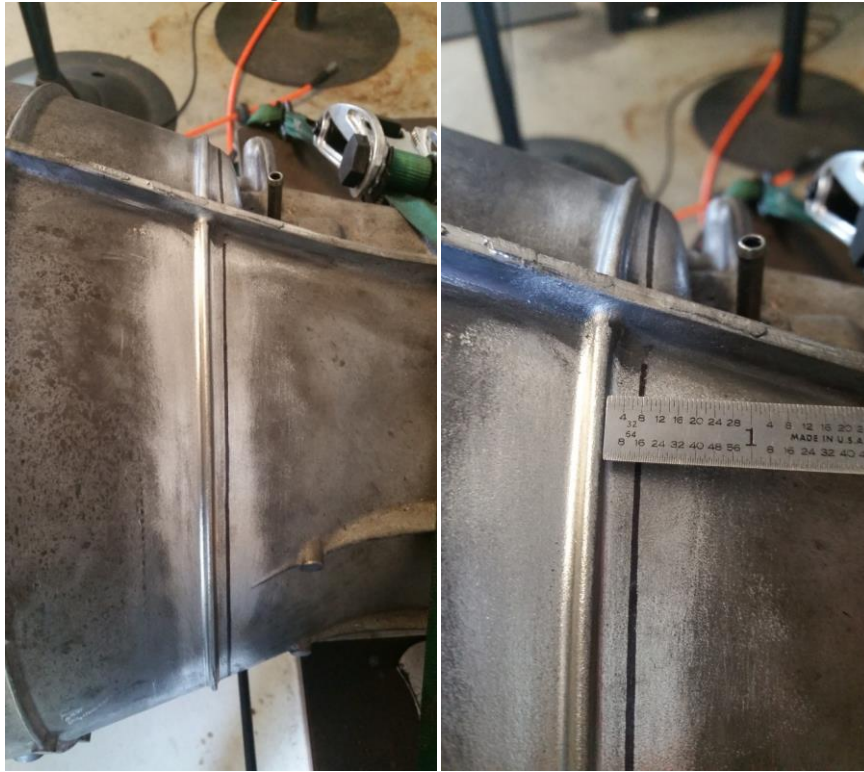
HR Adapter Ring

VHR Adapter Ring

Notes:

If using a standard single disc clutch, you will need the pivot ball, clutch fork, and bearing carrier from a VQ35DE series transmission. Use an SKF N1723 throw out bearing.

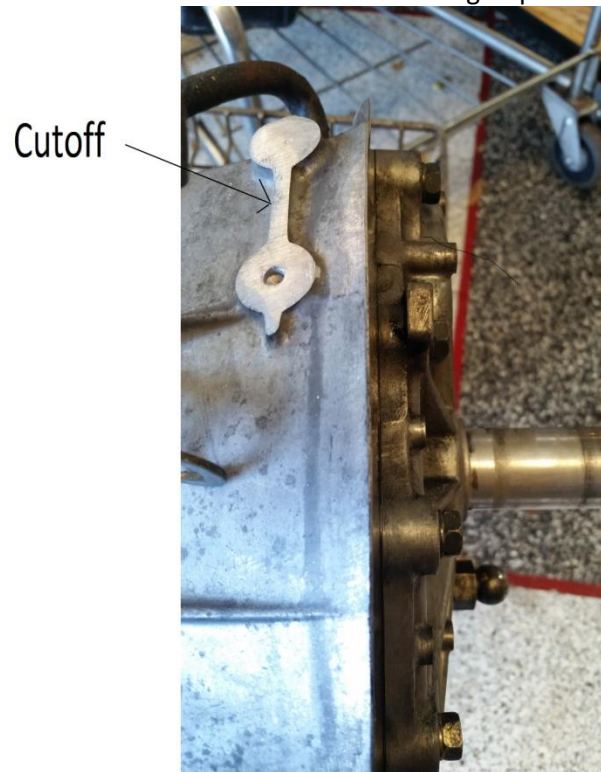
1. Draw a line 1/4" behind the rib that goes around the transmission.



2. Use a sawzall to cut along the line. Do not cut into the front cover area.



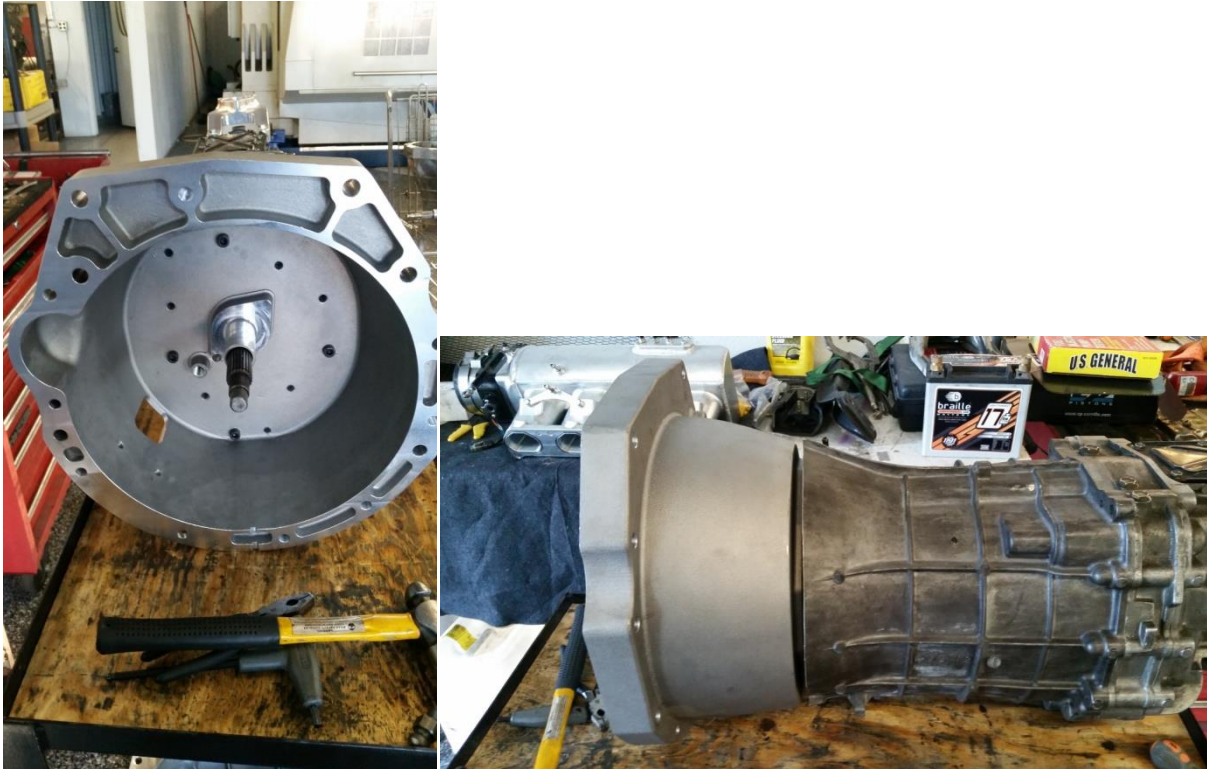
3. Remove bell housing from transmission. Cut off boss according to picture.



4. Mark and cutoff $3/8$ " from the input shaft. Chamfer the end of shaft similar to the OEM.



5. Make sure there is no fluid left in the transmission. Remove the stock input shaft front cover and gasket. Clean off area where new gasket will go. If you have an HR or VHR trans, you will need to put the adapter ring (sold separately) over the large bearing before installing the bell housing. Use new gasket and install bell housing. Torque bell housing bolts to 13 ft-lbs.



6. If you are using the stock slave, forks, and pivot ball assembly, install the pivot ball on the bell housing.
7. You must use the pilot bearing with adapter provided. Make sure the back of the crank bore is clean and free of burrs. Install it with the step going into the back of the crank first until it seats.